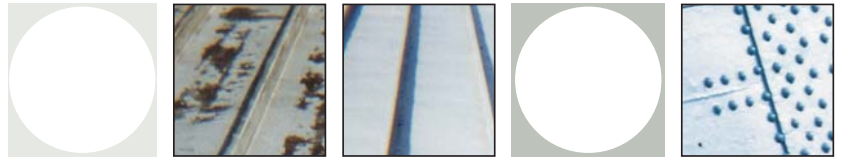




RUST DOESN'T REST



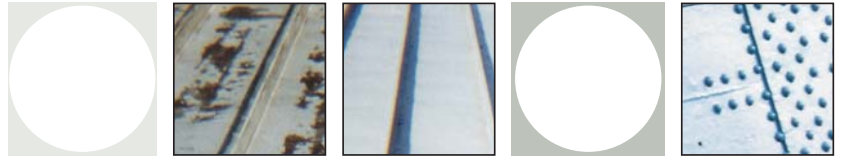
RD-ELASTOMETAL

A UNIQUE COATING
With a very long lifespan !

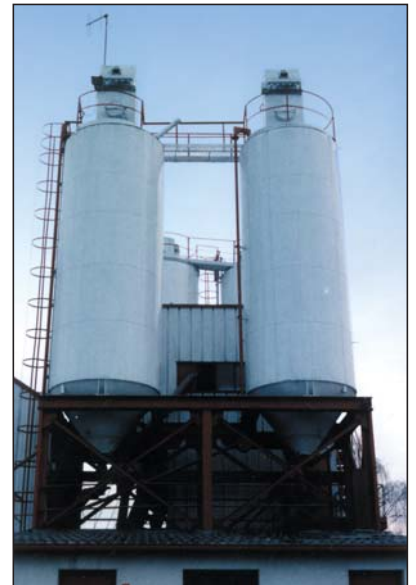
by Leon Bancken

- RD-ELASTOMETAL: Miscellaneous applications
- RD-ELASTOMETAL: The absolute environment friendly protection against rust
- The application of RD-ELASTOMETAL as an anti-corrosion system





RD-ELASTOMETAL: Miscellaneous applications



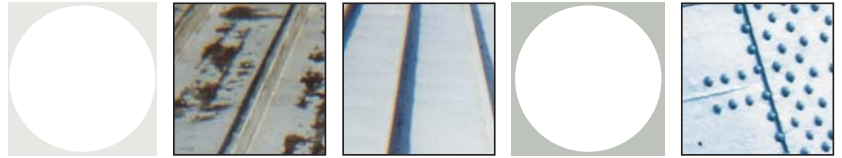
➤ As anticorrosion system for:

- Construction steel
- Claddings
- Roof gutters – tubes – pipelines
- Storage tanks
- Silo's
- High tension pylons
- Lamp posts
- Concrete reinforcement steel
- Galvanised substrates
- Substrates in aluminium – lead - copper
- Metal roofs – domes – bridges etc...

➤ As a waterproofing system and protection against the polluting release of harmful asbestos fibres, like asbestos- cement plates.

➤ As an adhesion primer diluted with 25% of water :

- Some kinds of plastics – PVC
- Glazed tiles
- Smooth concrete
- Glasal
- Smooth bricks
- Cold asphalt
- Lead – zinc – aluminium – copper
- Asbestos-cement plates
- Smooth mineral substrates
- Various wood types etc...



RD-ELASTOMETAL

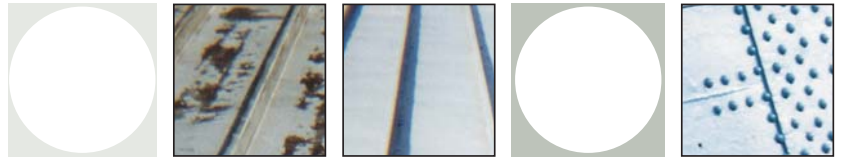


- Easy application by means of airless, brush or roller
- Time and labour saving
- Free of toxic damps
- Permanent elasticity (over 200%)
- Perfect to use for:
 - Ferro and non-ferro
 - Anti-corrosion protection for almost any kind of metal surface such as:
 - Roof protections
 - Claddings
 - Supporting constructions – bridges
 - External protection of storage tanks, pipelines etc...
- Lifespan: more than 10 years
- Perfect adhesion
- Easy, cheap and environment friendly substrate preparation: High pressure cleaning

➤ This system is:

- Labour and environment friendly
- Permanently elastic and without seams
- Without fire risk during the application
- Easy to apply
- Very advantageous ratio between quality and price

➤ **THE ABSOLUTE ENVIRONMENT FRIENDLY PROTECTION AGAINST RUST**
A universal high technological coating system
without limits



□ The application of **RD-ELASTOMETAL** as an anti-corrosion system



➤ PREPARATION:

A. Rusted surface with old, peeling coatings:

Clean by means of high water pressure (min. 300 Bar) in order to eliminate all the rust skin. The non adhering and loose old paint also have to be removed (good adhering coatings won't be eliminated).

B. New steel protected with a shopprimer.

Clean with high water pressure, preferably with hot water or with the addition of an appropriate degreasing product. Rinse very well.

C. Substrates with old epoxy's or polyurethanes. Same preparation as under B.



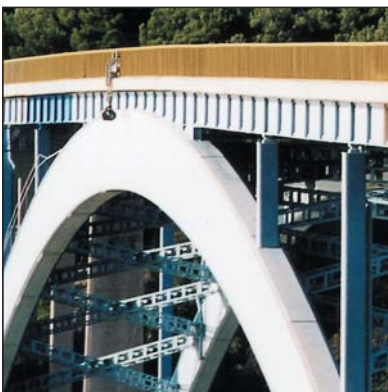
➤ FINISH:

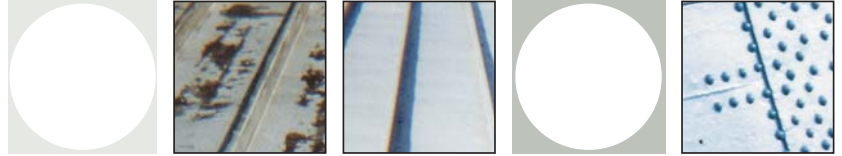
Apply by means of airless of two coats with a total consumption of 800 g/m² .

Dry coat thickness: 350 μm.

When the application is done with a brush or roller, at least three coats will be needed to obtain the same result.

This is in accordance to the required coat thickness in order to obtain the 10 year warranty.





RD-ELASTOMETAL

IS RECOATABLE BY:

Waterborne exterior paints:

RD-MUR ACRYL

RD-MUR ACRYL SATIN

RD-MUR ACRYL SEMI-GLOSS

RD-ELASTOFLEX

RD-ELASTOFLEX QUARTZ

RD-HYDROCRYL MAT

RD-HYDROCRYL SATIN

RD-HYDROCRYL GLOSS

RD-MONOPUR

Synthetic enamels or varnishes:

RD-ACRYVAR

RD-LUXLAK GLOSS